

Product Lookbook

Spring 2024 v1



Contents

1.	<u>Who We Are</u>	3
2.	<u>What We Do</u>	4
3.	<u>Our Products</u>	
	○ <u>Shading</u>	6
	○ <u>Interiors</u>	11
	○ <u>Exterior Wall Components</u>	18
	○ <u>Exterior Facades & Claddings</u> ...	24
	○ <u>Waterproofing</u>	37
4.	<u>Contact Us</u>	42



Who We Are

We represent quality manufacturers in the construction industry who provide energy-efficient, environmentally friendly, and sustainable construction solutions.



What We Do

EcoSpec is a family owned and operated manufacturer's representative firm. We empower Architects, Designers and Engineers with Sustainable Solutions.

Organization Affiliations:



Our Products



Shading



Shading

- Entrance Canopies
- Walkway Covers
- Trellises
- Retractable Roofs
- Retractable Canopies
- Free Standing Canopies
- Outdoor Structures
- Shading Devices





Retractable solutions for every project regardless of size or complexity.
Products that offer complete privacy and protection from the elements.





Creative Engineered Architectural Systems

Every CEAS+ canopy is project specific for a wide range of applications, including **commercial, retail, educational, corporate, and healthcare** facilities. While canopies are custom, we leverage our experience, in-house design, and engineering teams to work directly with architects and designers to streamline the process.

Our job is to **realize your vision.**



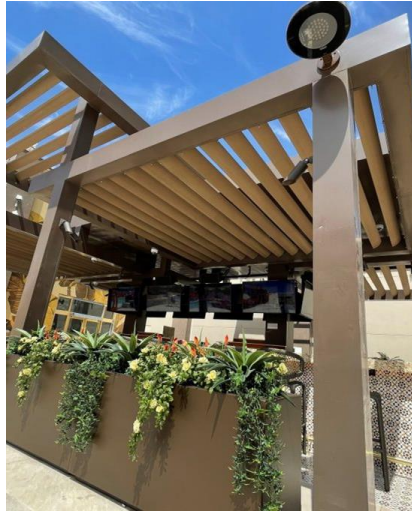
SPECIES UNICA



BORN IN VENICE

Woodn is a composite material, made up of a wood-based polymer alloy and PVC. The wood used comes from FSC procurement sources, a brand that identifies products containing wood coming from forests managed correctly and responsibly, according to rigorous environmental standards, social and economic, for beech and spruce wood products.

WOODN SHADING



Interiors





Interior

- Phenolic
- HPL
- Fabric
- Porcelain
- Stainless Steel
- Veneers
- Graphics
- Solid Surface
- Venetian Plaster
- Plastic Laminate

WPS

Wall Panel Systems

WPS precision design and engineering is key to quality. Our Design department meticulously reviews designs and job plans to address feasibility, safety concerns, and possible alternative solutions in order to prepare a fair and accurate per-details or per-job quote for our manufacturing services.



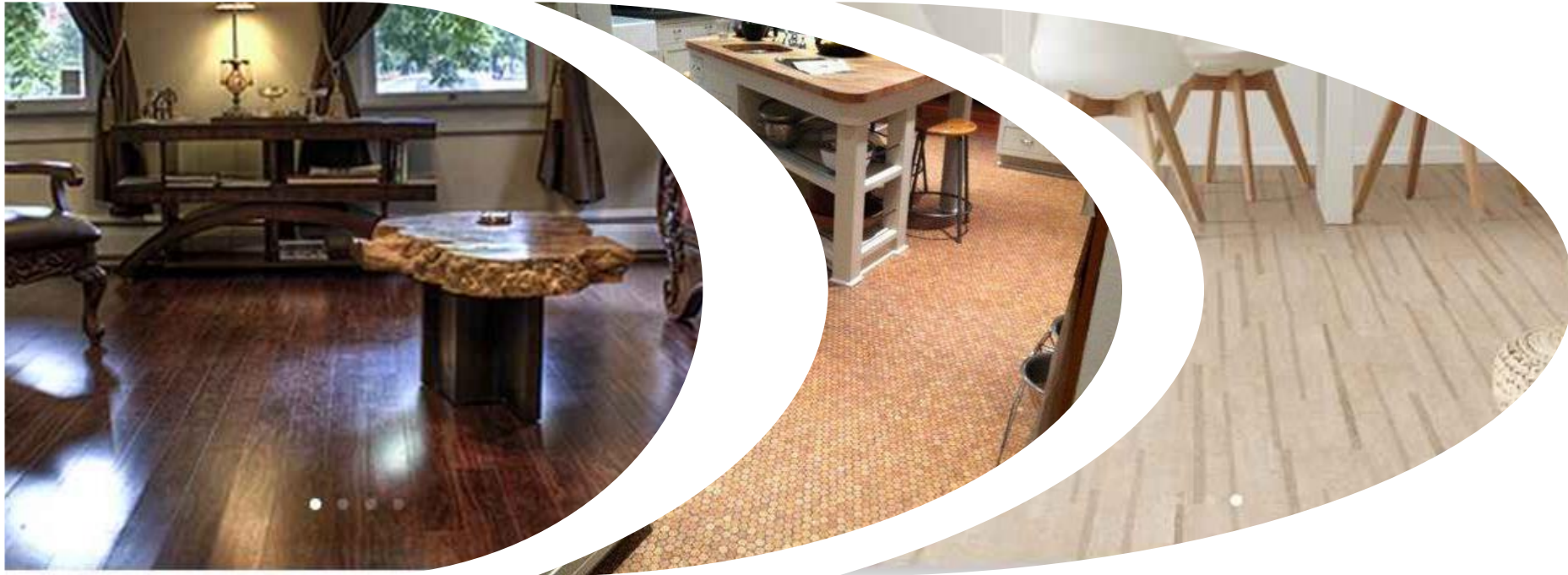


SUSTAINABLE MATERIALS

Looking for an impact surface that goes beyond beautiful? We are innovators that combine European manufacturing and high-end design, with products that are better than others and by default are 'sustainable.' And we're tree-huggers at heart, always looking for the next best sustainable materials to provide our clients with the latest in high performance green products for stunning interior designs.



We bring **sustainable global flooring innovations** to market. Our 'double threat' approach to developing 'best-in-class' durability with sustainable manufacturing and sourcing, gives us a unique positioning of focusing on **holistically superior products** [in an industry historically marred by mis-information, VOC short-comings (mal-aligned focus or greenwashing), and questionable sustainability practices].



Southwest Progressive Enterprises, Inc. has served the architectural and design community for over 34 years through its representation, distribution and installation of our superior Seamless Stone™ wall finishes. Since 1985, our knowledgeable staff has worked closely with architects, designers and spec writers at the planning stage to determine the appropriate patterns and colors for incredible interior wall finishes.

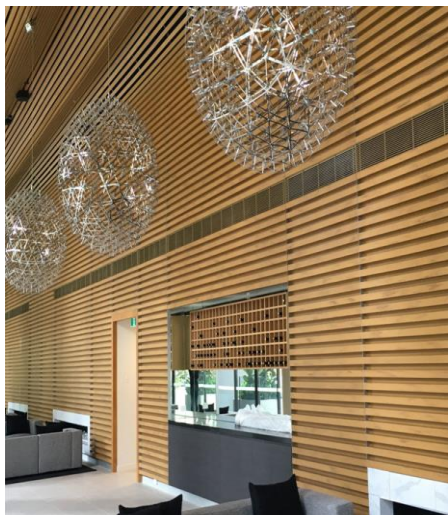


SPECIES UNICA

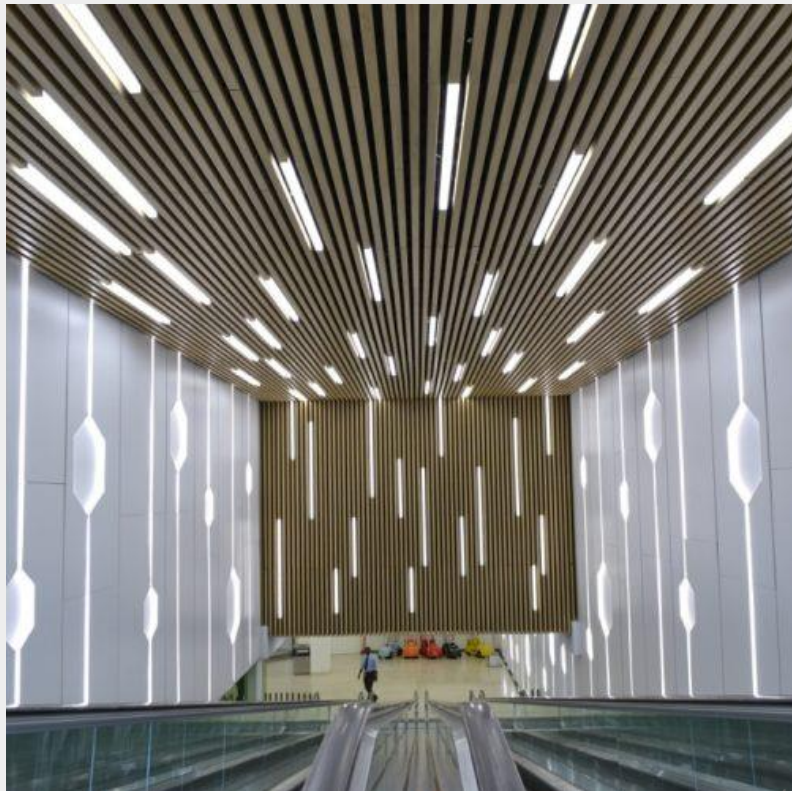


BORN IN VENICE

Woodn is a composite material, made up of a wood-based polymer alloy and PVC. The wood used comes from FSC procurement sources, a brand that identifies products containing wood coming from forests managed correctly and responsibly, according to rigorous environmental standards, social and economic, for beech and spruce wood products.



WOODN INTERIORS



Exterior Wall Components



Exterior Wall Components

- Air Barriers
- Insulation
- Rainscreen Attachment Systems
- Fasteners and Anchors

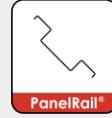


Knight Wall Rainscreen Attachment Systems

We provide rainscreen mounting solutions for nearly any cladding or building type—for both new construction and renovations. And Knight Wall Systems rainscreens can be specified with any cladding/siding product that meets the general loading requirements of each system.



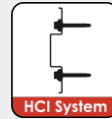
- ThermaZee® Cladding Attachment



- PanelRail® & RevealRail™



- MFI® System Cladding Attachment



- HCI System Cladding Attachment



- CI® System Cladding Attachment



- Custom Parts and Fabrication



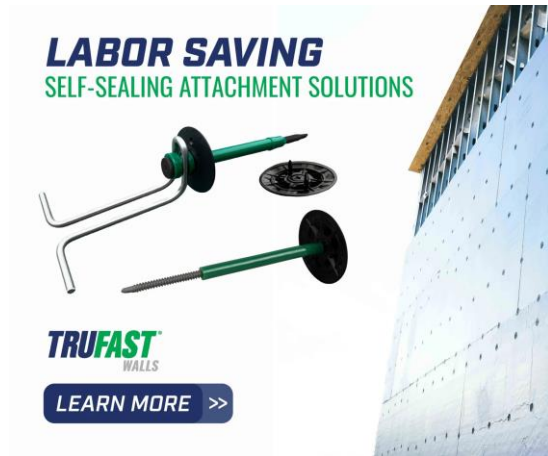
ECOMAXci® Wall Solution is a fully tested system, approved water-resistive barrier and engineered to optimize continuous insulation.

- ECOMAXci FR Air Barrier
- ECOMAXci FR
- TSX-8510
- DURASHEATH
- THERMASHEATH



TRUFAST[®] WALLS

To meet and exceed everchanging energy codes, TRUFAST[®] Walls has partnered with leading insulation, building wrap, and air/moisture barrier manufacturers and has developed fasteners and tools to rapidly install the material.



Tru Fast Walls

- Gypsum Sheathing Fasteners
- Building Wrap Fasteners
- Insulation Fasteners
- Cladding Fasteners
- Masonry Anchors and Ties



SIPLAST Air Barrier

Air and water management systems protect vertical building applications for commercial buildings. Continuity of air and water management from roof systems, vertical walls, and waterproofing terminations is critical for commercial buildings to achieve durable designs, energy-efficient performance, and to enable occupant health and comfort as part of holistic design solutions.



[Siplast Wall Control](#)



WALLcontrol™

Air & Water-Resistive Barrier Systems



Exterior Facades & Cladding



Exterior Facades & Cladding

- Wood Grains
- Steel Panels
- Aluminum Panels
- Single Skin
- Phenolic
- Fiber Cement
- Thin Brick
- EIFS
- Limestone Plaster
- Ceramic
- Solar





By embracing a contemporary and visionary approach to our cladding products, LUX blends a hybrid of the old-school mastery of the metal craft with the innovative and emergent technologies of creative culture. This allows LUX to consistently manufacture quality metal cladding products while also innovating, developing, and refining our metal cladding production processes.



American Fiber Cement

For over 30 years, we have been proudly supplying our customers with the best high-density fiber cement products on the market.



Panel Products

- Stone
- Core
- Rustic
- Groove
- Blast
- Matte
- Minerit
- TerraSlat by Tonality®



AMERICAN FIBER CEMENT

Our products offer innovative architects an exciting design element that can be used on contemporary projects. They are attractive, lightweight durable, cost-effective, sustainable, and maintenance-free applications.





Telling Architectural Systems

Engineered Rainscreen Facades

Telling Architectural Systems proudly supplies the world's most sustainable cladding materials. Each system from Telling is fully engineered, comprehensively tested, non-combustible and extremely durable. With offices in Saratoga Springs, NY, Telling maintains a staff of engineers and designers providing full service design and installation support. Here to help guide your project from schematic design to construction completion.





Elemex® offers the architectural industry new design possibilities with code compliant facade systems that are tested on our proprietary Unity® integrated attachment technology. Our systems are backed by comprehensive support across North America with our 360° Advantage.



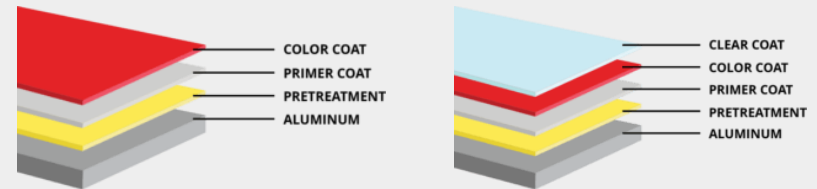


Alcotex® Aluminum Composite Material (ACM) will maximize the beauty of your structure while providing a sustainable product that prolongs the life of your building. High quality, versatility and durability have made Alcotex® a natural choice for architects on projects throughout the United States & Canada for more than 15 years.



ALCOTEX

- 4mm FR
- Width: 40", 49" & 62"
- Length up to 196"
- 2-Coat & 3 Coat



Wall Panel Systems

Wall Panel Systems specializes in the design of panel systems that meet the needs of the ever changing design community. We offer a complete panel system including shop drawings, panel fabrication, aluminum extrusion & installation support.



Exterior Panels

- Phenolic
- Wood Grain

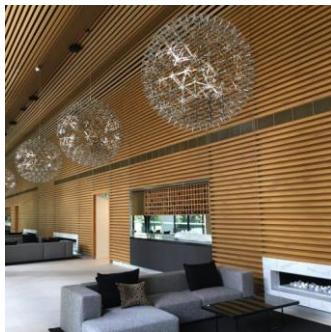


NexGen Metal Design Systems is a producer of high-performance architectural panel systems for the building enclosure. We offer our partners and architectural clients the trust of a family-owned company that has been fabricating metal panels and sheet metal for over 60 years.



Woodn is a composite material, made up of a wood-based polymer alloy and PVC.

The wood used comes from FSC procurement sources, a brand that identifies products containing wood coming from forests managed correctly and responsibly, according to rigorous environmental standards, social and economic, for beech and spruce wood products.



WOODN

- **INDOOR**
 - Modulatus (Ceiling/Indoor Cladding)
 - Ornans (Indoor Cladding)
- **OUTDOOR**
 - Greendeck
 - Versatilis (Pergola/Canopy, Sunscreen)
 - Modulatus (Soffit and Outdoor Cladding)



THERMOCROMEX™

LIMESTONE PLASTER ULTRA-HIGH-PERFORMANCE CLADDING

Thermocromex™ is a remarkable limestone plaster ultra-high-performance cladding that is a technically brilliant reformulation that can be applied to virtually any substrate, including CMU, frame/sheathing, tilt wall, poured-in-place concrete, and lightweight blocks/cement, and has been used successfully for over 25 years.



Transform your space with the stunning beauty of genuine kiln-fired clay brick, now made easy with Brickwebb™ patented mesh-mounted system.



Waterproofing



Barrier One

Barrier One Concrete Admixtures is the premier provider of concrete admixtures designed to improve the qualities of concrete.

Our comprehensive product line of admixtures is targeted to solve common concrete problems that plague the construction industry.





For over 10 decades the Barrett Company has had hands-on experience, professionally engineered products, and systems in the high-performance roofing and waterproofing markets.



Barrett Waterproofing Systems

- Hot Fluid Applied
- Cold Fluid Applied
- Trafficable Coatings
- Green Roof
- Insulation & Pavers
- Coatings, Mastics, & Sealants

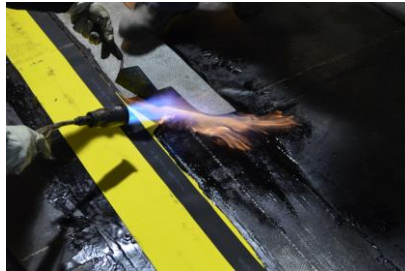


SITURA

SITURA is...

a globally recognized leading supplier of waterproof expansion joints for roofing and waterproofing applications.

SITURA waterproof expansion joints are specifically designed and engineered for use in a wide variety of applications, ranging from single ply membrane tie-ins to large-scale displacement seismic joints, without obstructing drainage and eliminating water ponding.



RedLINE

- For all liquid applied membranes; roofing or waterproofing applications.



FlamLINE

- For all torchable and self-adhered membranes; roofing or waterproofing applications.



AquaLine

- For Potable Water containment structures. FDA Certified and pharmaceutically pure.

Freedom Chemical Corporation

We are inspired by our clients, to create and innovate coating solutions beyond today. Freedom® Chemical Corporation is an innovator and manufacturer of elastomeric coatings that specializes in polyurea, polyurethane and epoxies systems for industrial, commercial and residential applications in the construction industry.



- Waterproofing
- Traffic Coatings
- Green Roofs
- Revitalization



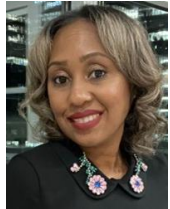
Contact Us!



Dewayne Thomas, CSI CCPR NOMA
Dewayne@Eco-Spec.US **LinkedIn**
(770) 580-5359
Office Ext.: 701



Cheryl Thomas
Cheryl@Eco-Spec.US **LinkedIn**
Office Ext.: 707



Marlena Matthews
MMatthews@Eco-Spec.US **LinkedIn**
Cell: (770) 728-8820
Office Ext.: 706



Aubrey Larcheveaux, CSI NOMA
AubreyL@Eco-Spec.us **LinkedIn**
(334) 424-8409
Office Ext.: 703



Edmond D. Miller, CSI NOMA
Miller@Eco-Spec.US **LinkedIn**
Cell: (205) 966-7240
Office Ext.: 704



Shirley Adams
Shirley@Eco-Spec.US **LinkedIn**
Office Ext.: 702

Office: (866) 480-4710



Thank You