

Product Lookbook

Winter 2025 v1



Contents

1. <u>Who We Are</u>	3
2. <u>What We Do</u>	4
3. <u>Our Categories</u>	5
○ <u>Shading</u>	6
○ <u>Interiors</u>	10
○ <u>Exterior Wall Components</u>	22
○ <u>Exterior Facades & Claddings</u> ...	28
○ <u>Glazing</u>	37
○ <u>Roofing & Waterproofing</u>	40
4. <u>Contact Us</u>	43



Who We Are

At EcoSpec, we focus on empowering architects, engineers, and designers with innovative sustainable solutions developed by our manufacturing partners.



ORAMA MINIMAL FRAMES



DecorAcoustics



What We Do

EcoSpec is a family owned and operated manufacturer's representative firm. We empower Architects, Designers and Engineers with Sustainable Solutions.

Organization Affiliations:



Our Catagories

- ❑ Shading
- ❑ Interiors
- ❑ Exterior Wall Components
- ❑ Exterior Facades & Cladding
- ❑ Glazing
- ❑ Roofing & Waterproofing



Shading



Shading



- ❖ Glass Canopies
- ❖ Translucent Canopies
- ❖ Metal Roof Canopies
- ❖ Entrance Canopies
- ❖ Walkway Covers
- ❖ Trellises



Creative Engineered Architectural Systems

Every CEAS+ canopy is project specific for a wide range of applications, including **commercial, retail, educational, corporate, and healthcare** facilities. While canopies are custom, we leverage our experience, in-house design, and engineering teams to work directly with architects and designers to streamline the process.

Our job is to **realize your vision.**





HALS INTERNATIONAL INC

We transform ambitious architectural concepts into stunning reality through our expertise in specialty glass and metal projects. From structural glass walls to innovative canopies and intricate glass flooring systems, we deliver turnkey solutions that inspire and endure.



Interiors



SKY

Interiors



- **CoreBOO Acoustics**
- **Recycled Wood Panels**
- **Cork Bricks**
- **Veneer Panels**
- **Wood Flooring**
- **Ceiling Baffles & Panels**
- **Glass Flooring, Stairs, & Rails**
- **Fritted, Jumbo, & Acid-Etched Glass**
- **Invisible Framed Glass Doors**

WPS

Wall Panel Systems

WPS precision design and engineering is key to quality. Our Design department meticulously reviews designs and job plans to address feasibility, safety concerns, and possible alternative solutions in order to prepare a fair and accurate per-details or per-job quote for our manufacturing services.





DÉCOR Acoustics

DÉCOR Acoustics aims to simplify the design and décor decisions for specifiers when they are faced with needing to rectify or design for challenging acoustic spaces.



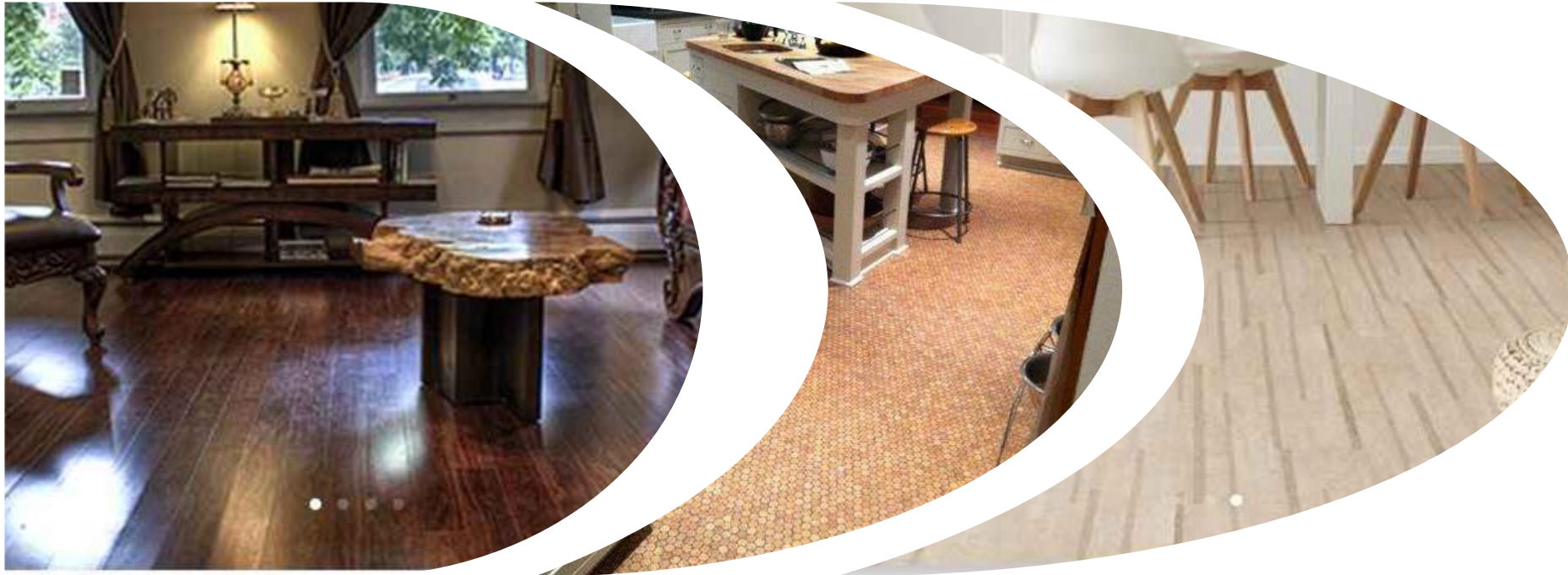


SUSTAINABLE MATERIALS

Looking for an impact surface that goes beyond beautiful? We are innovators that combine European manufacturing and high-end design, with products that are better than others and by default are 'sustainable.' And we're tree-huggers at heart, always looking for the next best sustainable materials to provide our clients with the latest in high performance green products for stunning interior designs.



We bring **sustainable global flooring innovations** to market. Our 'double threat' approach to developing 'best-in-class' durability with sustainable manufacturing and sourcing, gives us a unique positioning of focusing on **holistically superior products** [in an industry historically marred by mis-information, VOC short-comings (mal-aligned focus or greenwashing), and questionable sustainability practices.



Southwest Progressive Enterprises, Inc. has served the architectural and design community for over 34 years through its representation, distribution and installation of our superior Seamless Stone™ wall finishes. Since 1985, our knowledgeable staff has worked closely with architects, designers and spec writers at the planning stage to determine the appropriate patterns and colors for incredible interior wall finishes.



ORAMA MINIMAL FRAMES

 powered by
GUTMANN North America

Orama is the Greek word for Vision (=όραμα). Orama Minimal Frames is devoted in bringing every architect's vision to life. Our aim is to create the right frame solution for any architectural requirement – no matter how extreme or ambitious. We love architecture and architects love us! All our products have been designed into perfection and are available worldwide through our constantly expanding network of partners.





HALS INTERNATIONAL INC

We transform ambitious architectural concepts into stunning reality through our expertise in specialty glass and metal projects. From structural glass walls to innovative canopies and intricate glass flooring systems, we deliver turnkey solutions that inspire and endure.



VECTOR GLASS SYSTEM

WPS x SKYLINE PARTNERSHIP

The Vector Glass System is a patented single-source interior wall and ceiling system that marries a high-performance extrusion sub-assembly by Wall Panel Systems with a robust collection of glass types from Skyline Design. This partnership between WPS + Skyline Design represents over 60 years of industry knowledge and experience delivering projects into Workplace, Aviation, Healthcare, Retail, Sports, Education, and Civic environments.

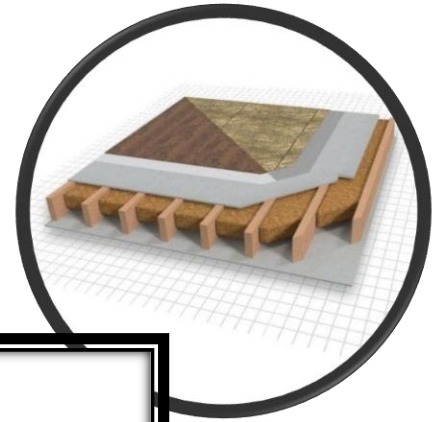
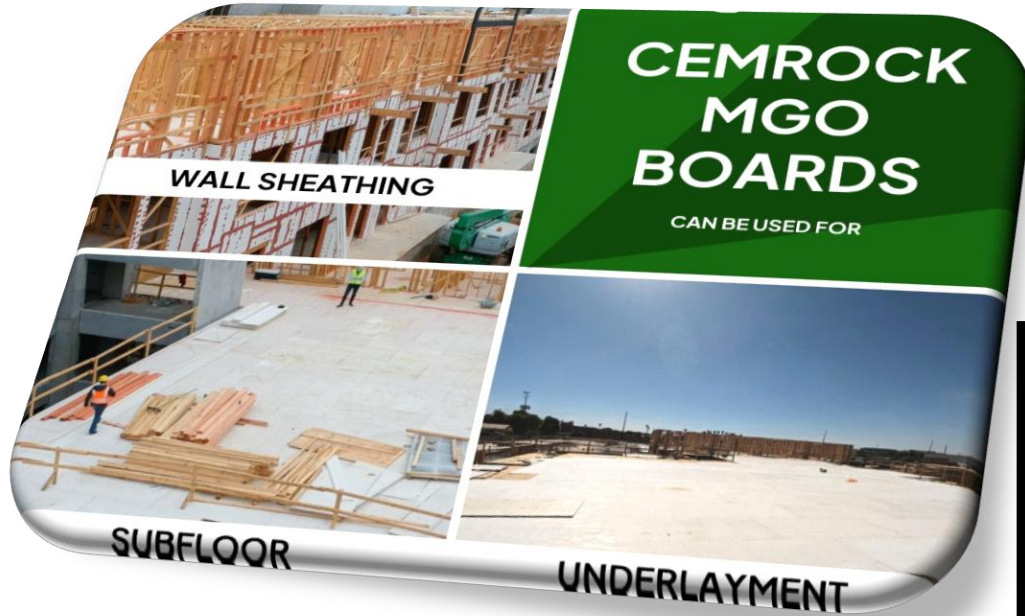


Transform your space with the stunning beauty of genuine kiln-fired clay brick, now made easy with Brickwebb™ patented mesh-mounted system.





Cem-Rock® Extreme Floor boards represents a quantum shift in flooring technology and has been developed to rapidly improve on flooring technology. Its fire, water, mold and mildew resistance properties far outweigh any competing products like plywood or OSB floor sheathing. Cem-Rock® Extreme Floor boards provides a superior flooring solution that is unaffected by environmental exposure during construction



Exterior Wall Components



Exterior Wall Components



- Air Barriers
- Insulation
- Rainscreen Attachment Systems
- Fasteners and Anchors
- Magnesium Oxide (MgO) Sheathing

Knight Wall Rainscreen Attachment Systems

We provide rainscreen mounting solutions for nearly any cladding or building type—for both new construction and renovations. And Knight Wall Systems rainscreens can be specified with any cladding/siding product that meets the general loading requirements of each system.



www.knightwallsystems.com



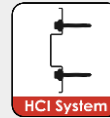
- ThermaZee® Cladding Attachment



- PanelRail® & RevealRail™



- MFI® System Cladding Attachment



- HCI System Cladding Attachment



- CI® System Cladding Attachment



- Custom Parts and Fabrication

TRUFAST[®] WALLS

To meet and exceed everchanging energy codes, TRUFAST[®] Walls has partnered with leading insulation, building wrap, and air/moisture barrier manufacturers and has developed fasteners and tools to rapidly install the material.



Tru Fast Walls

- Gypsum Sheathing Fasteners
- Building Wrap Fasteners
- Insulation Fasteners
- Cladding Fasteners
- Masonry Anchors and Ties





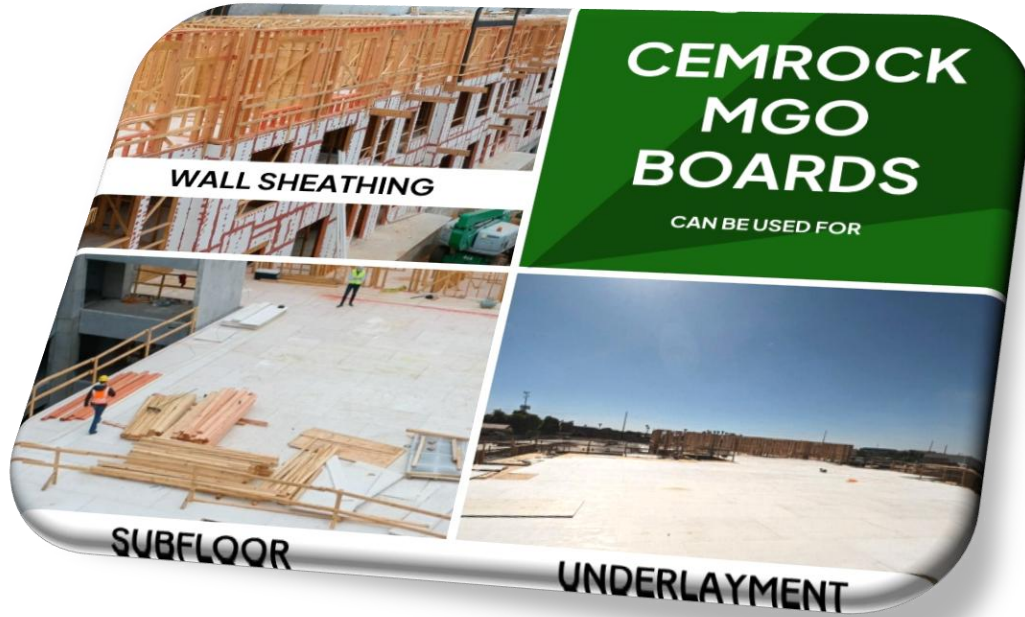
ECOMAXci® Wall Solution is a fully tested system, approved water-resistive barrier and engineered to optimize continuous insulation.

- ECOMAXci FR Air Barrier
- ECOMAXci FR
- TSX-8510
- DURASHEATH
- THERMASHEATH



CEM-ROCK®

Cem-Rock Extreme x4 1/2" Wall Sheathing board was developed from the widespread need for a board with racking, pull-through, and pull-out strength. It is an ideal substrate for exterior walls, interior partitions, and tile backing for wet and humid areas.



Exterior Facades & Cladding



Exterior Facades & Cladding

- Wood Grains
- Steel Panels
- Aluminum Panels
- Single Skin
- Phenolic
- Fiber Cement
- Thin Brick
- EIFS
- Limestone Plaster
- Ceramic
- Solar





By embracing a contemporary and visionary approach to our cladding products, LUX blends a hybrid of the old-school mastery of the metal craft with the innovative and emergent technologies of creative culture. This allows LUX to consistently manufacture quality metal cladding products while also innovating, developing, and refining our metal cladding production processes.





**AMERICAN
FIBER CEMENT**

When it comes to your project, time is money. That's why we make it a priority to provide you with high quality fiber cement products and exceptional service. Our US-based distribution facilities enable us to deliver products efficiently. Once your timeline is established, our team of experts will work with you to ensure your project schedule stays on track.



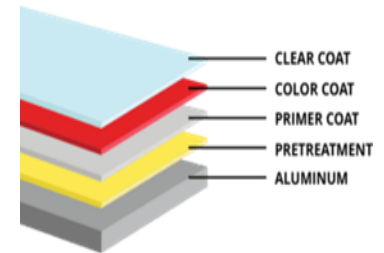
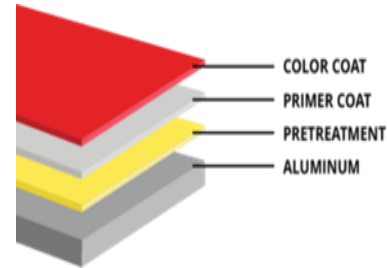


Alcotex® Aluminum Composite Material (ACM) will maximize the beauty of your structure while providing a sustainable product that prolongs the life of your building. High quality, versatility and durability have made Alcotex® a natural choice for architects on projects throughout the United States & Canada for more than 15 years.



ALCOTEX

- 4mm FR
- Width: 40", 49" & 62"
- Length up to 196"
- 2-Coat & 3 Coat





Elemex® offers the architectural industry new design possibilities with code compliant facade systems that are tested on our proprietary Unity® integrated attachment technology. Our systems are backed by comprehensive support across North America with our 360° Advantage.



THERMOCROMEX™

LIMESTONE PLASTER ULTRA-HIGH-PERFORMANCE CLADDING

Thermocromex™ is a remarkable limestone plaster ultra-high-performance cladding that is a technically brilliant reformulation that can be applied to virtually any substrate, including CMU, frame/sheathing, tilt wall, poured-in-place concrete, and lightweight blocks/cement, and has been used successfully for over 25 years.



Wall Panel Systems

Wall Panel Systems specializes in the design of panel systems that meet the needs of the ever changing design community. We offer a complete panel system including shop drawings, panel fabrication, aluminum extrusion & installation support.



Exterior Panels

- Phenolic
- Wood Grain



A complete fire-tested thin veneer wall assembly system that is also the most cost-effective way to incorporate Continuous Insulation and air barrier into the building envelope.



Commercial Glazing Systems

- Curtain Wall Systems
- Window Systems
- Structural Wall Systems
- Structural Cable Wall Systems
- Jumbo Glass
- Specialty Glass
- Traditional Door Systems
- Sliding Elements
- Minimal Frame Doors
- Invisible Frame Doors
- Pivoting Frame Doors
- Frameless Doors





HALS INTERNATIONAL INC

We transform ambitious architectural concepts into stunning reality through our expertise in specialty glass and metal projects. From structural glass walls to innovative canopies and intricate glass flooring systems, we deliver turnkey solutions that inspire and endure.





Gutmann North America is a leading manufacturer and supplier of high-performance aluminum building systems, including Curtain Wall, Window Wall, Doors and Windows, that have been designed and tested specifically for the North American market. We also offer Sliding Doors, Folding Doors, and Minimal Frame Sliding Systems.

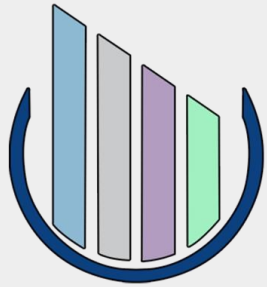


Roofing & Waterproofing



When you are looking for a product that can protect your asset for the long term, that's when you turn to a proven, sustainable, and quality product. At IB Roof Systems, we are dedicated to providing our customers just that. Contractors and design professionals comfortably and confidently select to work with products from IB because of their performance, reliability, and longevity.





BARRIER ONE

CONCRETE ADMIXTURES

- Barrier One Concrete Admixtures sets the standard for concrete enhancement, with a full range of admixtures designed to reduce moisture vapor and inhibit porosity.
- All of our concrete admixtures are extensively tested in independent laboratories to ensure quality and repeatable performance in every application.

PIA



POROSITY INHIBITING
CONCRETE ADMIXTURE

CSX



INFRASTRUCTURE &
WATERPROOFING
ADMIXTURE

TPX



TILT-UP & PRECAST
ADMIXTURE

CPS



MOISTURE VAPOR
REDUCTION ADMIXTURE

WPX



WATERPROOFING
ADMIXTURE

Outside Sales Team

Office: (866) 480-4710



Dewayne Thomas, CSI CCPR NOMA

Dewayne@Eco-Spec.us

Cell: (770) 580-5359

Office Ext.: 701 **LinkedIn**



Aubrey Larcheveaux, CSI NOMA

AubreyL@Eco-Spec.us

Cell: (334) 424-8409

Office Ext.: 703 **LinkedIn**



Brandon Brown, NOMA

Brandon@Eco-Spec.us

Cell: (423) 313-0638

Office Ext.: 705 **LinkedIn**



John Robinson, CDT GRP RRO

John@Eco-Spec.us

Cell: (770) 840-5754

Office Ext.: 708



Jerome Brown, NOMA

JBrown@Eco-Spec.us

Cell: (423) 314-7481

Office Ext.: 706

www.Eco-Spec.Us



EcoSpec

Empowering Architects, Engineers,
and Designers with Sustainable Solutions



Thank You